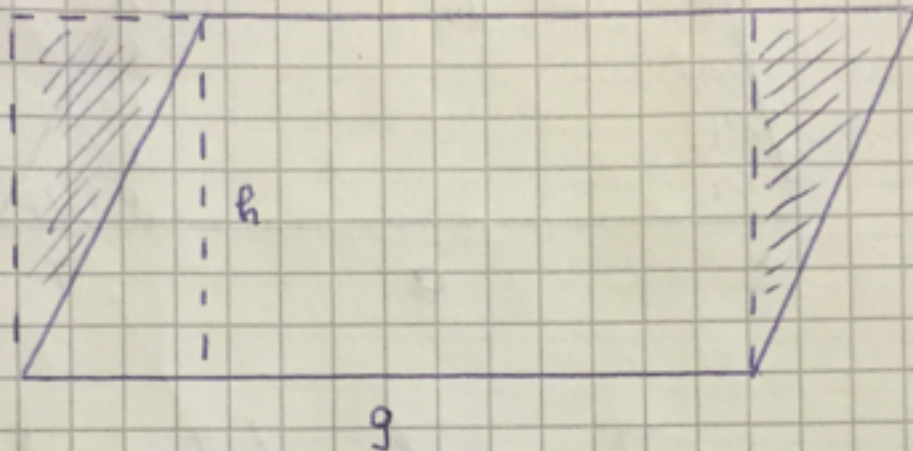
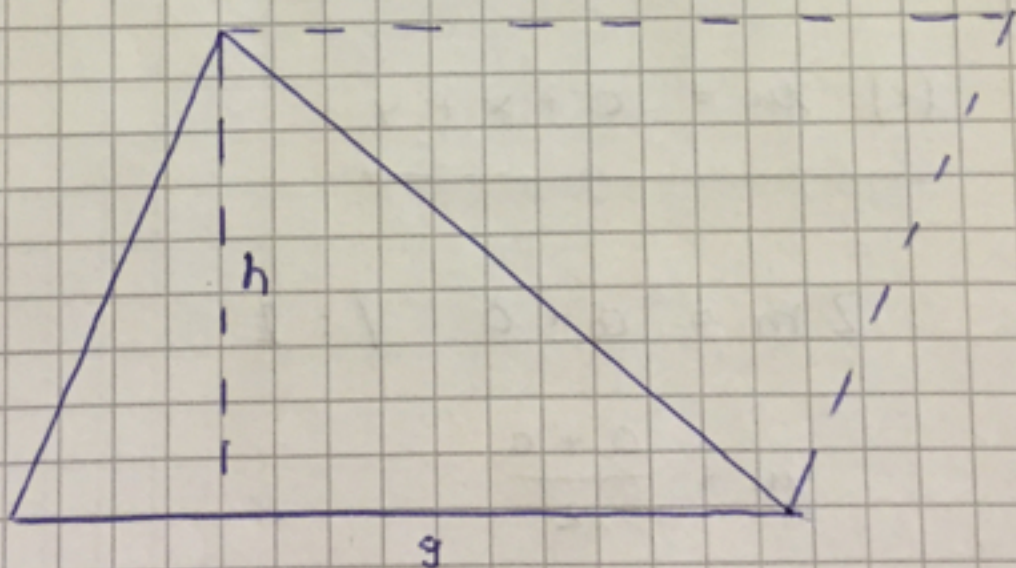


Flächenformeln entwickeln für

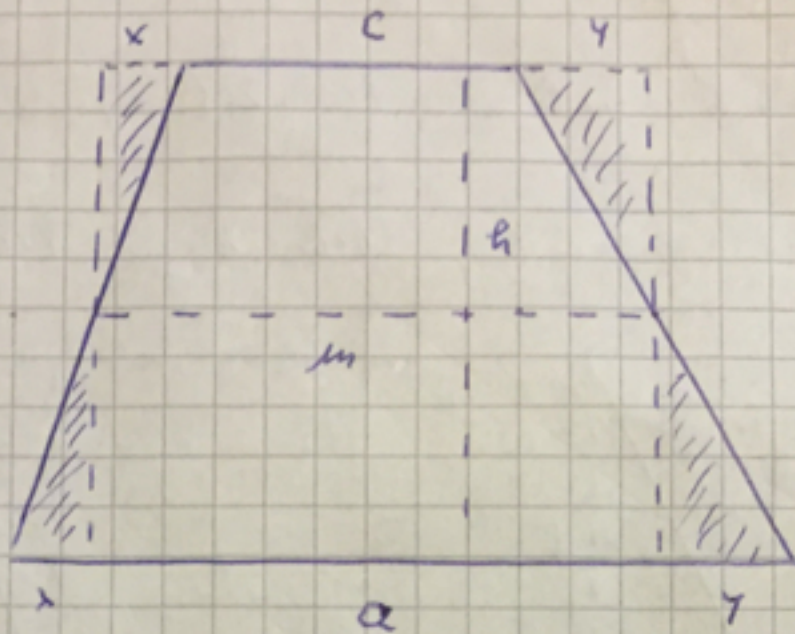
Parallelogramm, Dreieck u. Trapez; etc.



$$A = g \cdot h \quad (\text{Parallelogramm})$$



$$A = \frac{g \cdot h}{2} \quad (\text{Dreieck})$$



$$A = m \cdot h \quad (\text{Trapez})$$

m : Mittelparallel

$$m = a - x - y$$

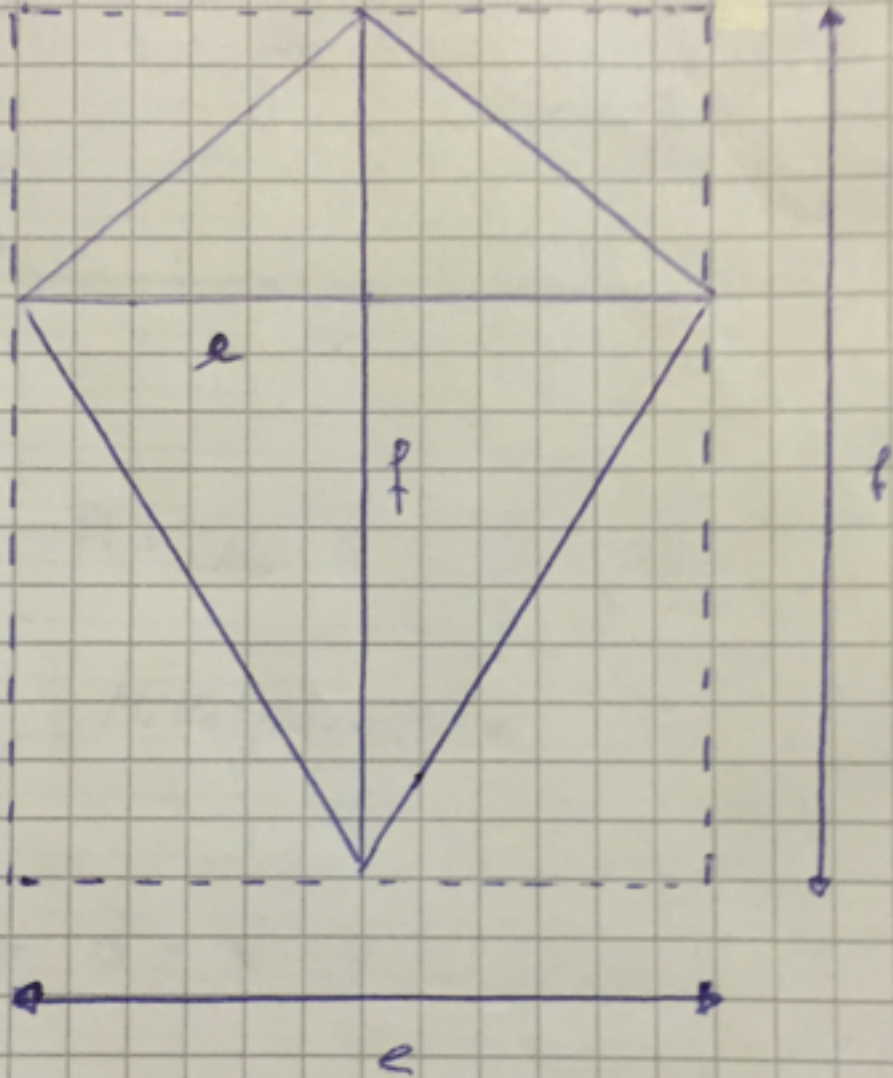
$$(*) \quad m = c + x + y$$

$$2m = a + c \quad | : 2$$

$$m = \frac{a + c}{2}$$

$$\Rightarrow A = \frac{a + c}{2} \cdot h \quad (\text{Trapez})$$

Drachenviereck: $A = \frac{e \cdot f}{2}$



$$\Rightarrow A = \frac{e \cdot f}{2}$$